

LED	DL2	DL1
TX	No power	
	Power on	
	Programming in progress	
LED	DL4	DL1
RX	No alignment/ photocell engaged	No power
	Alignment on	Power on
	Insufficient alignment	/
	Programming in progress	

Words in bold: LED statuses with photocells powered, aligned and not engaged

CHANGE TRANSMISSION CHANNEL

This unit features up to 4 channels that can help to install up to 4 photocells in vicinity with each other without interference.

To program the channel, use the **P1** button:

- Press and hold until both LEDs start flashing
- While the LEDs are flashing, press the button again to change the channel
- The number of flashes indicate the channel number
- After the desired channel flashes 6 times the photocell will exit programming
- Program transmitter and receiver at the same frequency

IMPORTANT: Assign a different channel to every pair of photocells of the system

MAINTENANCE



NO detergents NO oil NO silicon



Verify operation at least every 6 months

RECOGNIZED COMPONENT
 Conforms to
 ANSI/UL Std 325
 Intertek
 4007950



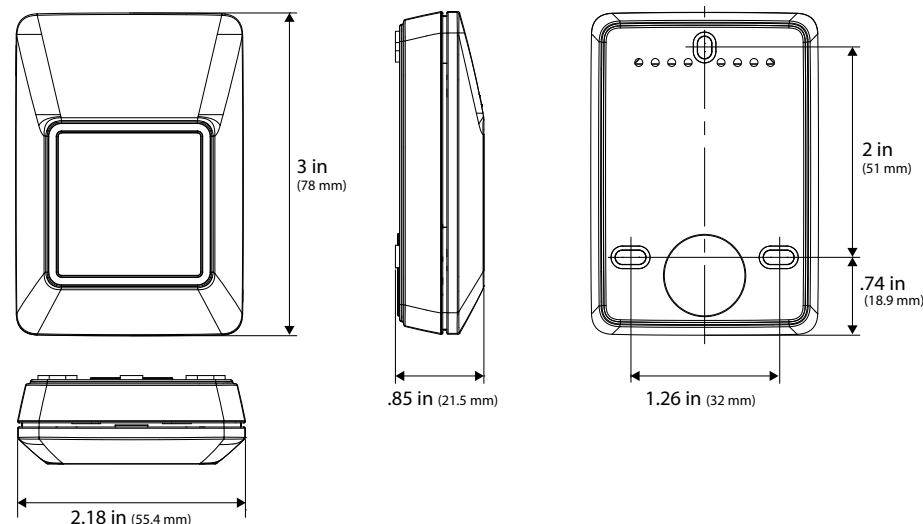
FA-XP30-10K

INFRARED PHOTOCELLS
 WITH 10K MONITORED OUTPUT

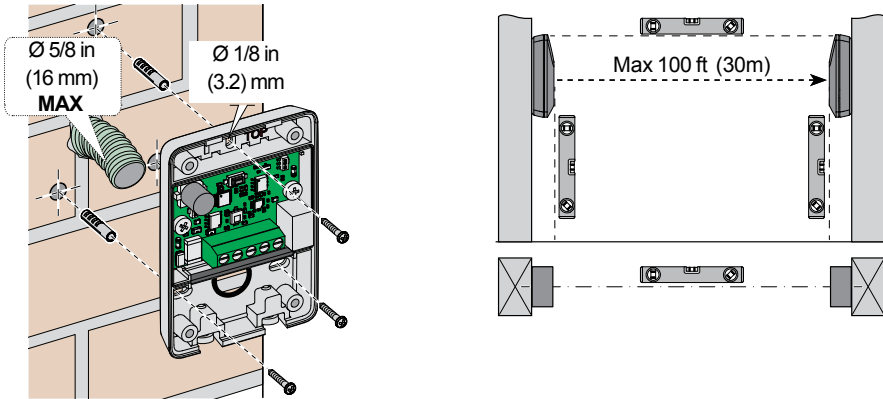


Technical Specifications	
Voltage Supply	12-24 VAC / VDC
Operating Current Transmitter	20mA
Operating Current Receiver	30mA
Technology	Modulated infrared light - 4 separate channels
Ambient Operating Temperature	4°F to 131°F (-20 °C to +55°C)
LED beam angle	±7° @ 65 ft (20m) ±13.5° @ 16 ft (5 m)
Max Range	100 ft (30 m)
Output	NO/NC relay 1A - 120V
Protection Class	IP54
Mounting	Wall, optional conduit and column adapters

Dimensions

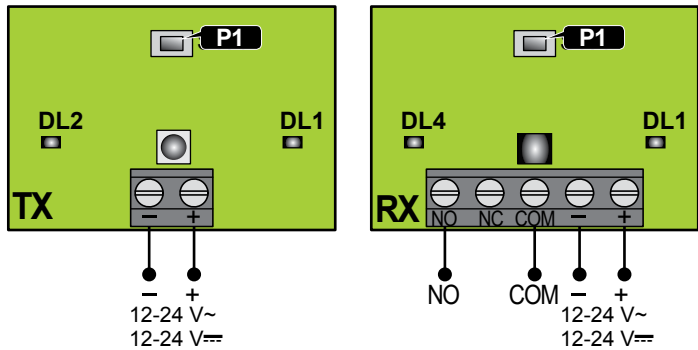


1



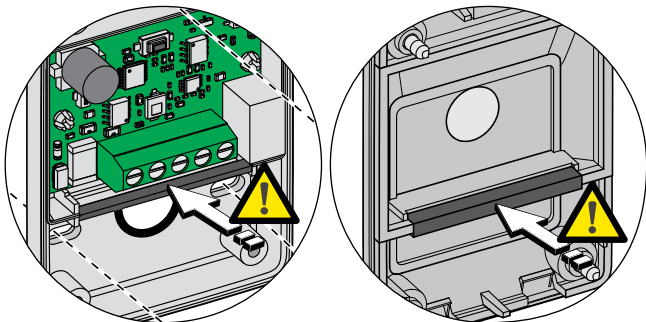
Mount the photocells to a secure and solid surface. Position them so they are aligned and unobstructed. Do not exceed the maximum sensing distance

2



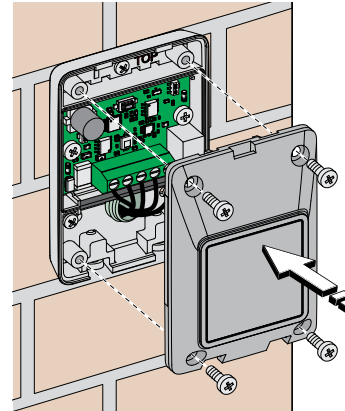
Wire the transmitter and receiver to the operator. Recommended wire gauge: 20 AWG

3



Route the wires over the sealing gasket. This is important to achieve the rated IP protection.

4

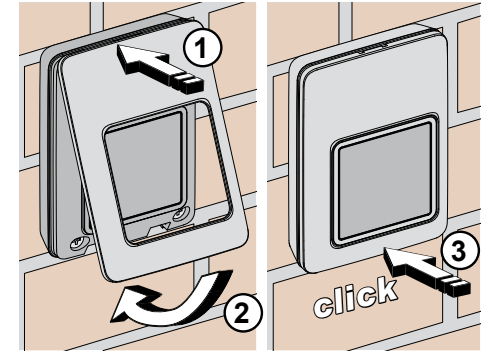


Attach the front cover as illustrated

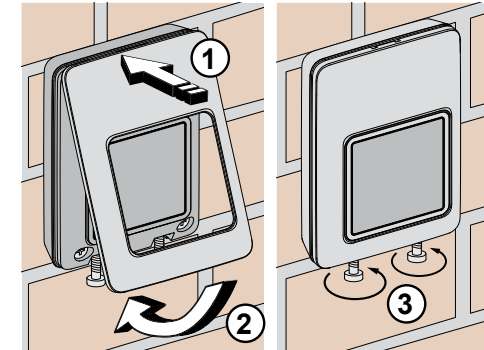
IMPORTANT: Test and operate the photocell with the front cover in place

5

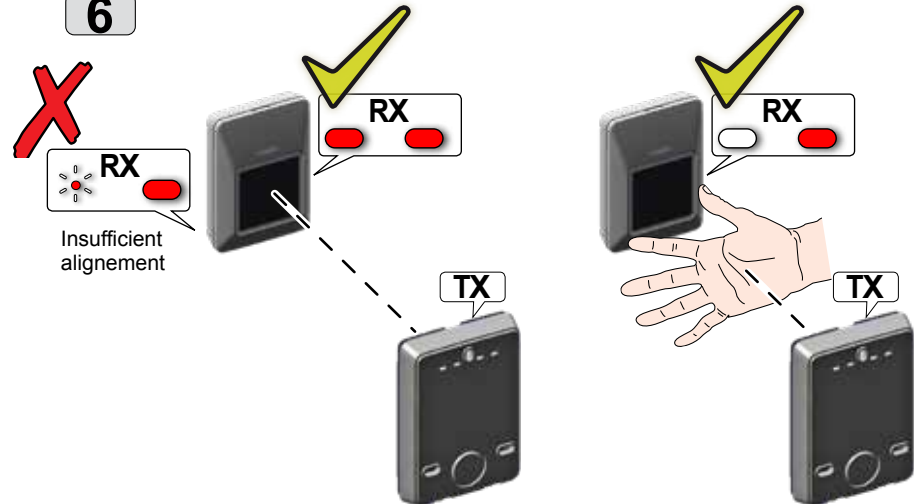
Attach the Bezel: Plastic model



Attach the Bezel: Stainless Steel model



6



Check proper operation from the Status LEDs